



GAT MONTHLY MEMBERSHIP PROGRESS REPORT

Results as of: 12/31/2022

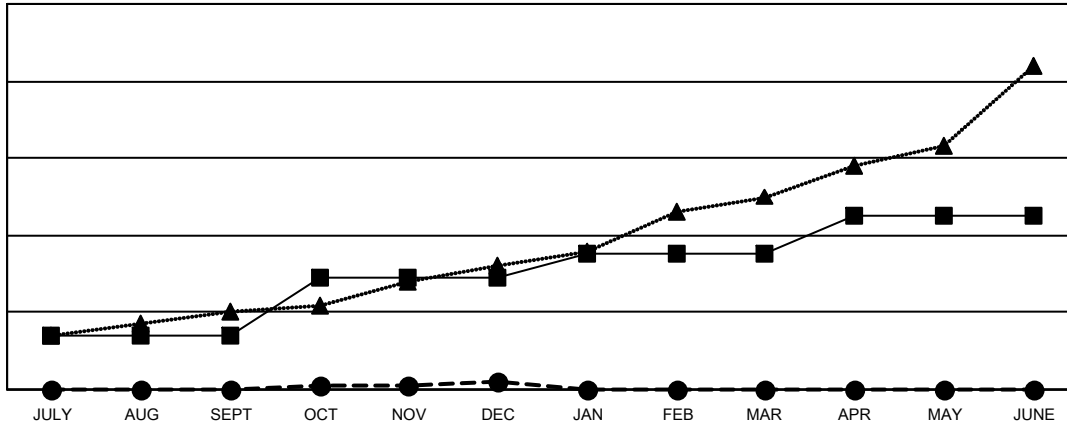
Multiple District 305

LOCATION: PAKISTAN

| Clubs | | | |
|-----------------------|---------------|-----------|---------------|
| RESULTS FOR 2022-2023 | | | |
| QUARTER | NEW CLUB GOAL | NEW CLUBS | DROPPED CLUBS |
| JULY/AUG/SEPT | 14 | 0 | 3 |
| OCT/NOV/DEC | 15 | 2 | 21 |
| JAN/FEB/MAR | 6 | 0 | 0 |
| APR/MAY/JUNE | 10 | 0 | 0 |

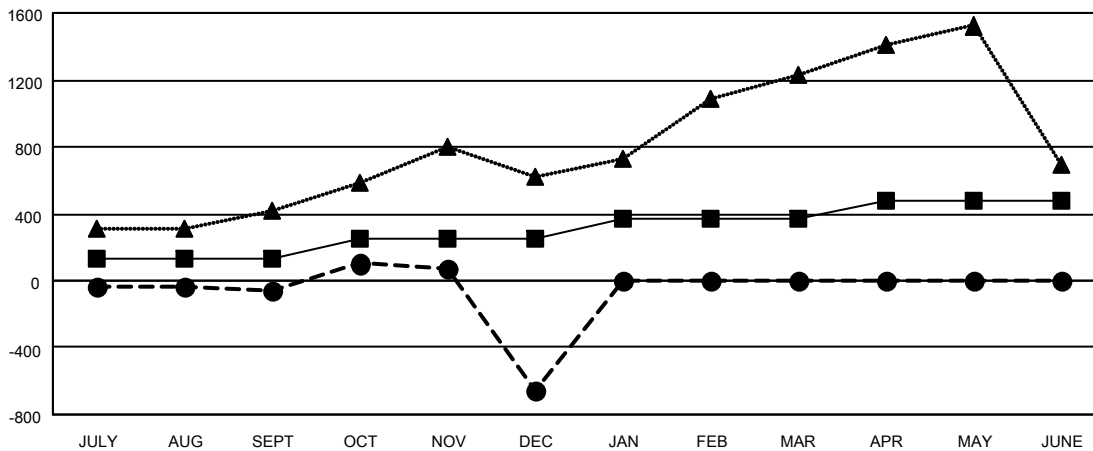
| Members | | | |
|-----------------------|------------------------|----------------------|--|
| RESULTS FOR 2022-2023 | | | |
| QUARTER | MEMBER GROWTH NET GOAL | MEMBER GROWTH ACTUAL | DROPPED MEMBERS ACTUAL (including transfers) |
| JULY/AUG/SEPT | 135 | 223 | 266 |
| OCT/NOV/DEC | 120 | 438 | 983 |
| JAN/FEB/MAR | 110 | 0 | 0 |
| APR/MAY/JUNE | 115 | 0 | 0 |

GOALS AND ACTUAL NEW CLUBS CUMULATIVE



- - CURRENT YEAR GOALS FOR NEW CLUBS
- - CURRENT YEAR ACTUAL NEW CLUBS
- ▲ - LAST YEAR ACTUAL NEW CLUBS

GOALS AND ACTUAL MEMBERS CUMULATIVE



- - MEMBER GROWTH NET GOAL
- - MEMBER GROWTH ACTUAL
- ▲ - LAST YEAR MEMBERSHIP ACTUAL

| | | |
|--------------------------|---|--|
| DROPPED CLUBS: 24 | 112 CLUBS OF 405 ADDED 1 OR MORE NEW MEMBERS | GENDER DISTRIBUTION |
| DROPPED MEMBERS | CLICK HERE FOR CUMULATIVE MEMBERSHIP DATA | MALE 6,074 (75.24%) |
| DECEASED 2 | | FEMALE 1,999 (24.76%) |
| CLUB CANCELLED 367 | | NON BINARY 0 (0.00%) |
| OTHER 880 | | PREFER NOT TO ANSWER 0 (0.00%) |
| TOTAL 1,249 | | TOTAL FAMILY UNIT MEMBERS 6,703 |
| | | FAMILY MEMBERS PAYING HALF DUES 5,103 |